



VESCO
MEDICAL™

Q Pump® Bag Feed Set

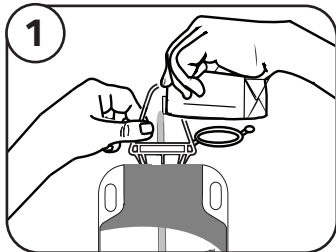
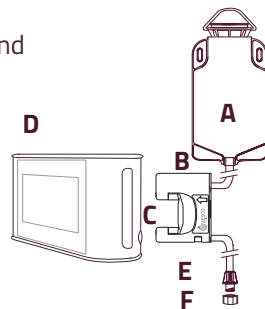
Instructions for Use

The Vesco Q Enteral Feeding Pump® System is intended to be used by healthcare professionals, patients and caregivers for the intermittent and continuous delivery of enteral fluids for adult and pediatric (infant, child, and adolescent) feeding therapy in hospital and homecare environments.

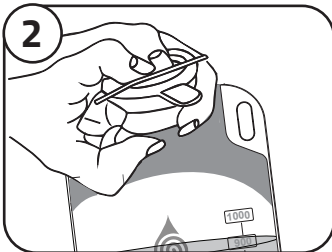
Precautions:

- Failure to follow correct preparation of the pump set can negatively affect the accuracy of the enteral infusion system.
- Feed sets cannot be used for feeding programs for longer than 24 hours due to risk of bacterial contamination and system inaccuracy.

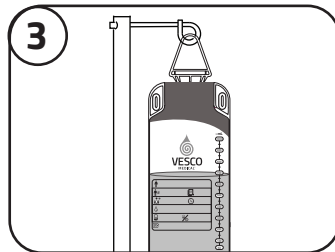
Directions:



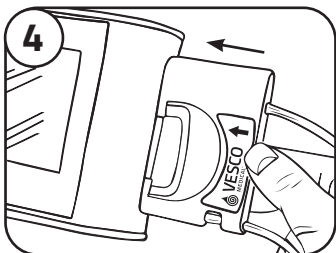
Fill bag (A) with desired/prescribed amount of enteral fluids.



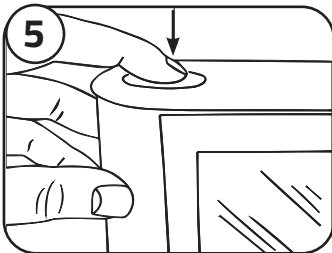
Securely close lid.



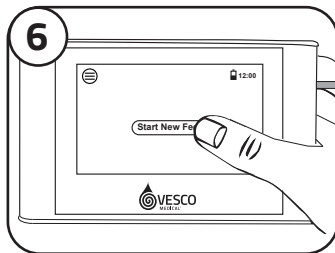
Hang bag on IV Pole 6 inches above top of pump.



Insert cassette (B) into green opening (C) and click into place.



Press POWER button (D) on top of pump to power on.



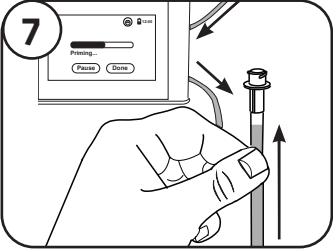
Touch START NEW FEED to initiate programming.

Scan
HERE

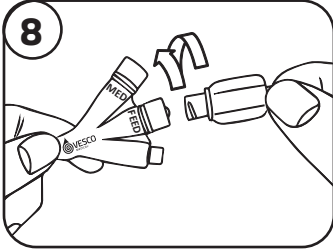


Scan for Additional Instructions on set-up and programming the pump.
or visit www.vescomedical.com/Q-resource-center

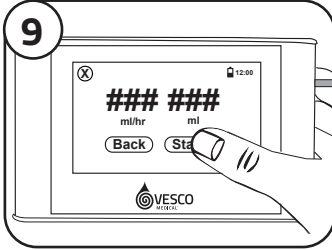
Directions (cont.):



Remove dust cover (F) then prime to send nutrition to end of feed set.



Attach distal female ENFit connector (E) to patient's male ENFit connector on feeding tube.



Run feed as programmed.

Note: This feed set is intended for use with the Vesco Q Enteral Infusion Pump to be used for enteral feeding therapy only. Approximate volume in milliliters.

Warnings:

- Feed set should not be misconnected with small bore connectors of other healthcare applications.
- Feed sets cannot be used for feeding programs longer than 24 hours because they cannot be adequately cleaned or sterilized for reuse, with risks of bacterial contamination, system inaccuracy, as well as bio-incompatibility from attempts.
- Use of feed sets longer than 24 hours risks bacterial contamination and negative effects on system accuracy.
- Do not use if package is opened or damaged.

Glossary of Symbols:

 Do not reuse intended for single use	 Do not use if package is damaged	 Expiry date	 Read Instructions for Use	 Caution, consult accompanying documents	 Non Sterile
 Reference number	 Lot Number	 Date of manufacture	 Prescription use only	 (MR) Unsafe	 Not for IV use
 Keep away from sunlight	 Keep dry	 Manufacturer	 Not made with BPA	 Not made with phthalate plastcizers	 Not made with natural rubber latex

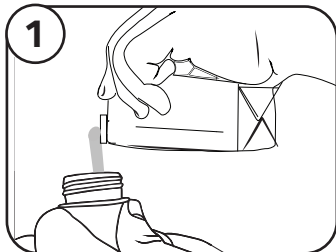
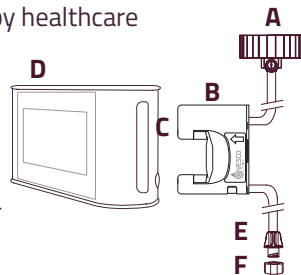
VESCO Q Pump® Screw Cap Feed Set MEDICAL™ Instructions for Use

The Vesco Q Enteral Feeding Pump® System is intended to be used by healthcare professionals, patients and caregivers for the intermittent and continuous delivery of enteral fluids for adult and pediatric (infant, child, and adolescent) feeding therapy in hospital and homecare environments.

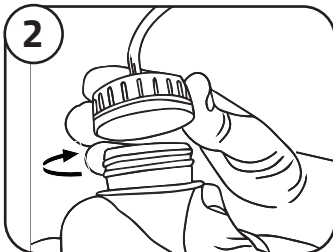
Precautions:

- Failure to follow correct preparation of the pump set can negatively affect the accuracy of the enteral infusion system.
- Feed sets cannot be used for feeding programs for longer than 24 hours due to risk of bacterial contamination and system inaccuracy.

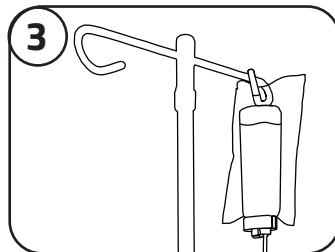
Directions:



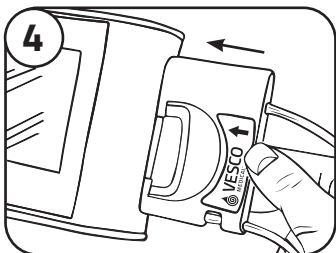
Fill or use prefilled container with desired or prescribed amount of enteral fluids.



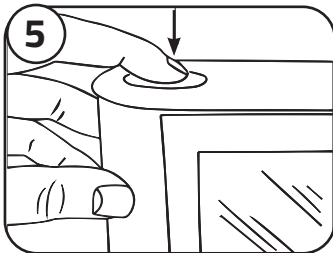
Securely connect screw cap (A) to nutrition container.



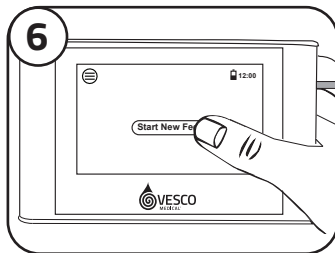
Hang nutrition on IV Pole 6 inches above top of pump.



Insert cassette (B) into green opening (C) and click into place.



Press POWER button (D) on top of pump to power on.



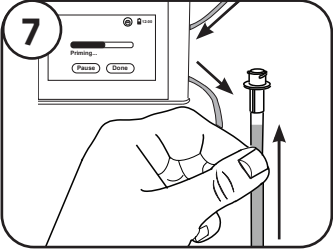
Touch START NEW FEED to initiate programming.

Scan
HERE

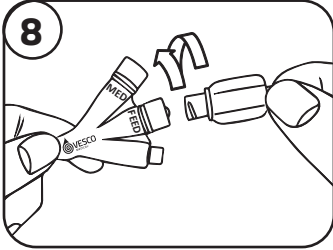


for Additional Instructions on set-up and programming the pump or visit www.vescomedical.com/Q-resource-center

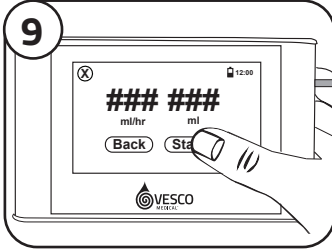
Directions (cont.):



Remove dust cover (F) then prime to send nutrition to end of feed set.



Attach distal female ENFit connector (E) to patient's male ENFit connector on feeding tube.



Run feed as programmed.

Note: This feed set is intended for use with the Vesco Q Enteral Infusion Pump to be used for enteral feeding therapy only. Approximate volume in milliliters.

Warnings:

- Feed set should not be misconnected with small bore connectors of other healthcare applications.
- Feed sets cannot be used for feeding programs longer than 24 hours because they cannot be adequately cleaned or sterilized for reuse, with risks of bacterial contamination, system inaccuracy, as well as bio-incompatibility from attempts.
- Use of feed sets longer than 24 hours risks bacterial contamination and negative effects on system accuracy.
- Do not use if package is opened or damaged.

Glossary of Symbols:

 Do not reuse intended for single use	 Do not use if package is damaged	 Expiry date	 Read Instructions for Use	 Caution, consult accompanying documents	 Non Sterile
 Reference number	 Lot Number	 Date of manufacture	 Prescription use only	 (MR) Unsafe	 Not for IV use
 Keep away from sunlight	 Keep dry	 Manufacturer	 Not made with BPA	 Not made with phthalate plastcizers	 Not made with natural rubber latex



VESCO
MEDICAL™

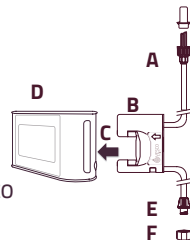
Q Pump® ENPlus Spike Feed Set

Instructions for Use

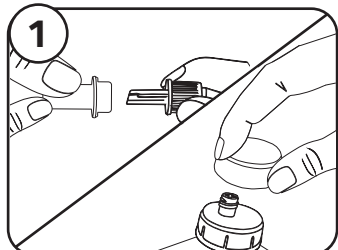
The Vesco Q Enteral Feeding Pump® System is intended to be used by healthcare professionals, patients and caregivers for the intermittent and continuous delivery of enteral fluids for adult and pediatric (infant, child, and adolescent) feeding therapy in hospital and homecare environments.

Precautions:

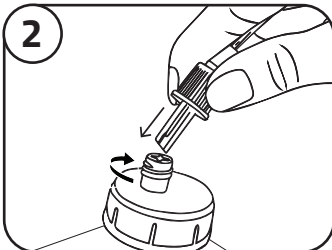
- Failure to follow correct preparation of the pump set can negatively affect the accuracy of the enteral infusion system.
- Feed sets cannot be used for feeding programs for longer than 24 hours due to risk of bacterial contamination and system inaccuracy.



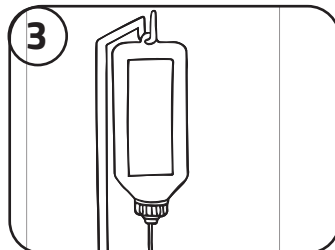
Directions:



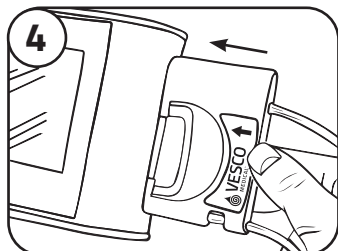
Remove dust cover from ENPlus Spike and prefilled nutrition container.



Securely spike and fasten ENPlus (A) to prefilled nutrition container.



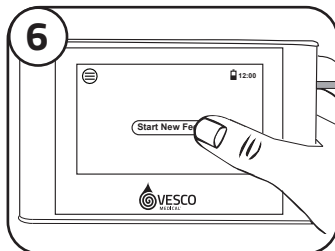
Hang nutrition on IV Pole 6 inches above top of pump.



Insert cassette (B) into green opening (C) and click into place.



Press POWER button (D) on top of pump to power on.



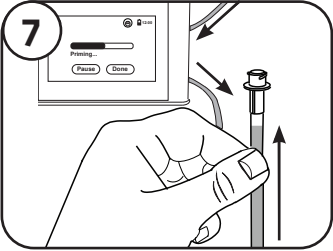
Touch START NEW FEED to initiate programming.

Scan
HERE

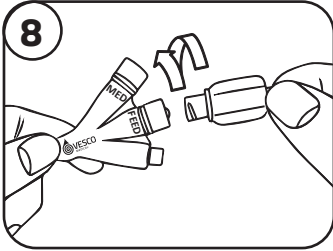


for Additional Instructions on set-up and programming the pump
or visit www.vescomedical.com/Q-resource-center

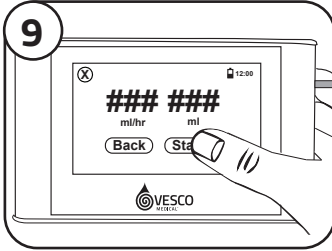
Directions (cont.):



Remove dust cover (F) then prime to send nutrition to end of feed set.



Attach distal female ENFit connector (E) to patient's male ENFit connector on feeding tube.



Run feed as programmed.

Note: This feed set is intended for use with the Vesco Q Enteral Infusion Pump to be used for enteral feeding therapy only. Approximate volume in milliliters.

Warnings:

- Feed set should not be misconnected with small bore connectors of other healthcare applications.
- Feed sets cannot be used for feeding programs longer than 24 hours because they cannot be adequately cleaned or sterilized for reuse, with risks of bacterial contamination, system inaccuracy, as well as bio-incompatibility from attempts.
- Use of feed sets longer than 24 hours risks bacterial contamination and negative effects on system accuracy.
- Do not use if package is opened or damaged.

Glossary of Symbols:

 Do not reuse intended for single use	 Do not use if package is damaged	 Expiry date	 Read Instructions for Use	 Caution, consult accompanying documents	 Non Sterile
 Reference number	 Lot Number	 Date of manufacture	 Prescription use only	 (MR) Unsafe	 Not for IV use
 Keep away from sunlight	 Keep dry	 Manufacturer	 Not made with BPA	 Not made with phthalate plastcizers	 Not made with natural rubber latex