

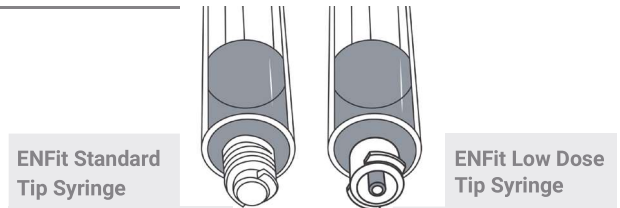
Procedure for Inpatient Settings: Preparing and Administering Medications Using ENFit®



Purpose: Outline the preparation and administration of medication doses using the ENFit system. This procedure will be applicable to patients of all age groups in inpatient settings.

Background: The ENFit® system is the new ISO standard for enteral connectors. It promotes patient safety by reducing the risk of misconnection between unrelated systems by implementing a unique mechanical design. The syringes are available in 2 tip versions: low dose and standard dose.

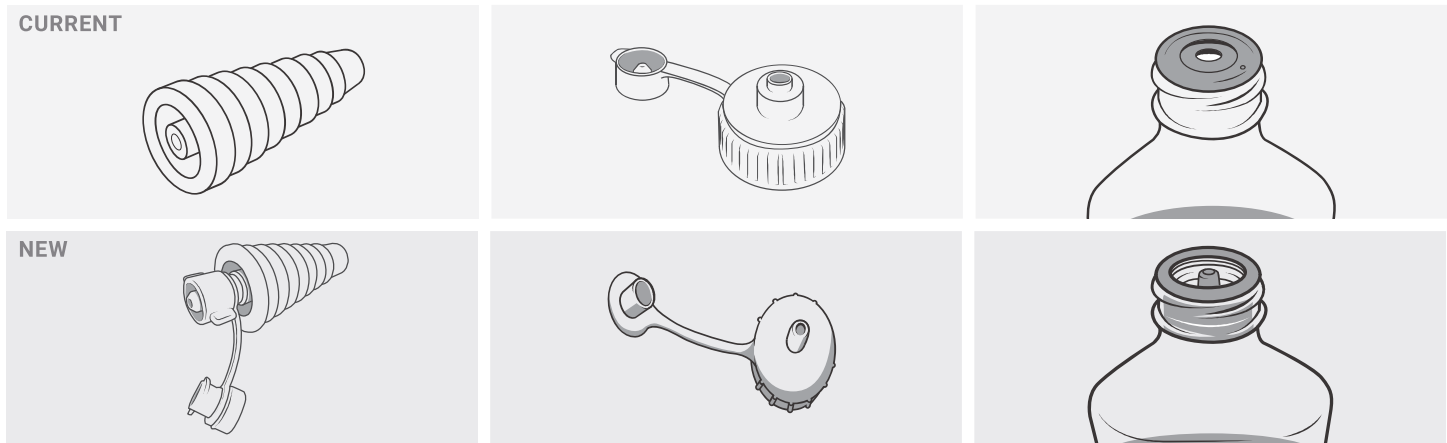
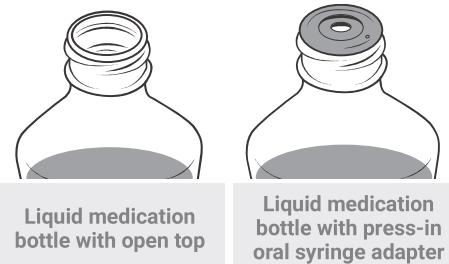
The standard ENFit tip is used on most syringe sizes. The low dose tip (available in smaller sizes as defined by the manufacturer) was developed to address clinicians' concerns about dosing accuracy when delivering small medication volumes. For syringe performance information on the low dose tip and other currently available products, see GEDSA's ENFit Low Dose Tip presentation (www.stayconnected.org).



MEDICATION PREPARATION: FILLING A SYRINGE USING A BOTTLE FILL CAP

Always consult the syringe manufacturer on instructions for use. These are guidelines for general filling practices and do not supersede the manufacturer recommendations.

Current fill caps will NOT work directly with the new ENFit syringes. This procedure will demonstrate different ways to fill ENFit syringes.



Step 1. Make sure that the medication bottle has an ENFit compatible fill cap such as the ones shown above.

